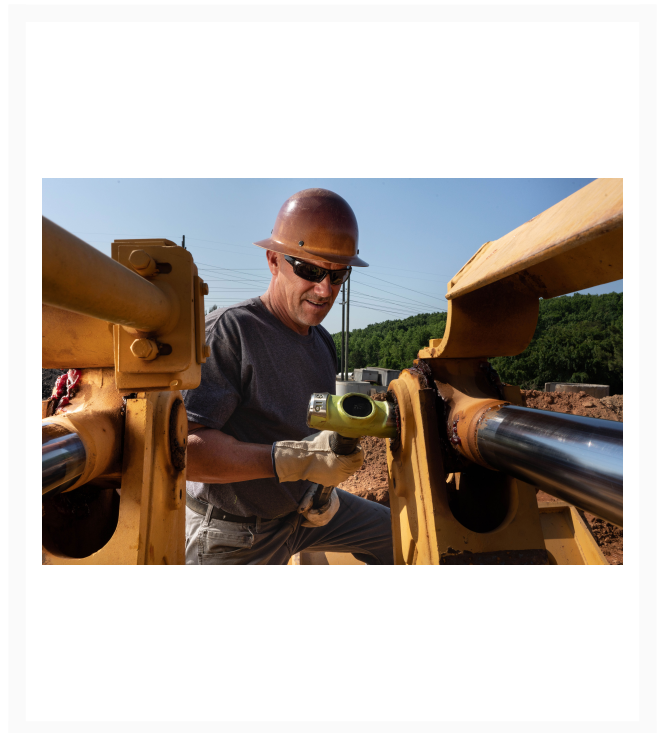




10 Lb Head, 30" B.A.S.H® Sledge Hammer

Product Images



Short Description

Wilton B.A.S.H 30" Sledge Hammer, 10 Lb (21030)

Additional Information

Stock Number	WL9-21030
Face Diameter (In.)	2-1/4
Handle Length (In.)	30
Head Material	Drop Forged Steel
Head Weight (Lbs.)	10
Prop 65	Cancer
Type	Sledge Hammer
Warranty	Lifetime
Gross Weight	14.5

